

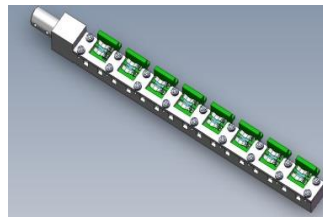
## Composition Analysis for Ultratrace Gas of Blowhole in Glass Suitable for various Material Evaluation

### Feature

- Measurement/Analysis of gases emitted from the blowhole that is generated in glass at manufacturing processes, is possible by using Quadrupole Mass Spectrometer ( QMS ). Glasses will be cleaved mechanically in order to extract gases.
- Available Quantitative and Qualitative Analysis down to minimum 5 picoliter ( pL ). Regarding Ar, approximately 1pL detection sensitivity is provided.
- Measurement of several kinds of gas is simultaneously executed.
- Glass sample size : approximately a 10mm x 10mm  
 Regarding thickness, please let us have separate consultation.
- A load lock structure gives advantages of specimen exchange and maintenance. Under keeping (U)HV condition, one of 8 specimens in sample bank can be easily exchanged.

### Application:

- Cause investigation of gas generation by type identifying
- Evaluation of Manufacturing Process
- Evaluation of Quality Stability by quantifying gas volume
- Specify degassing condition



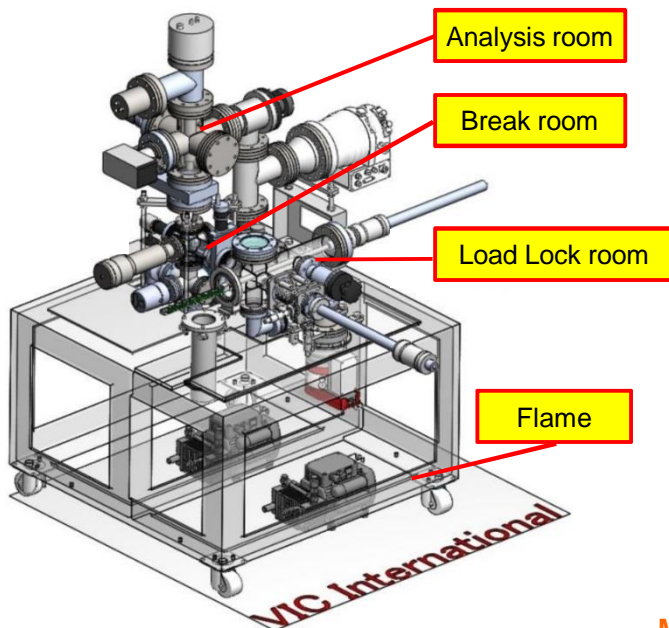
Sample Bank



Product Example

### Object Material:

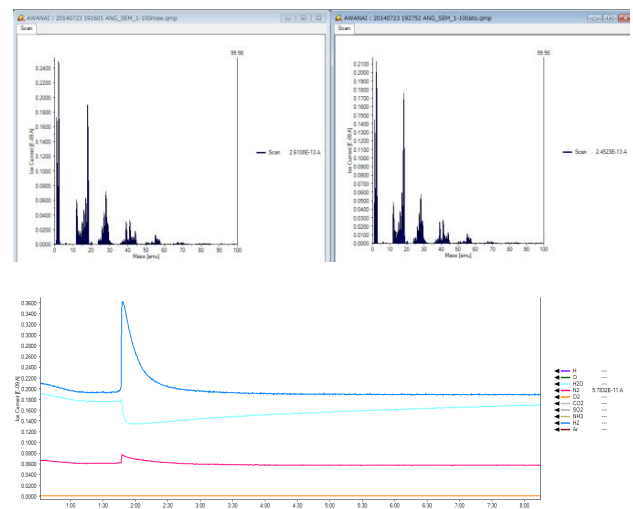
- Glass, Semiconductor packages, etc.



General view of equipment

### Monitor Display ( connect to PC ):

Mass number display, Real time graphing of detected gas signal, and Data Saving are available.



Measurement & Analysis of customer's specimen is available ( be charged ). Feel free to contact us.