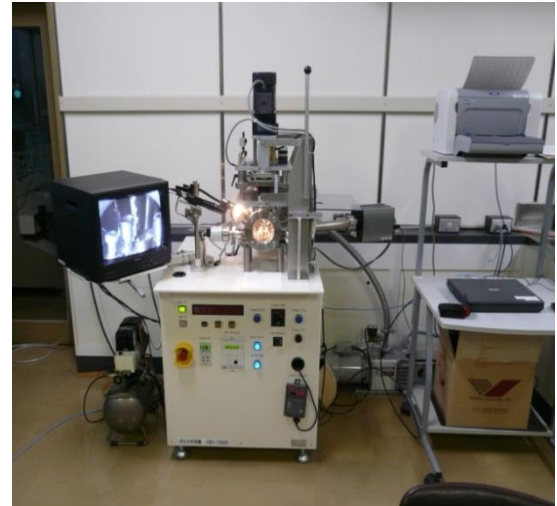


## Quantitative & Qualitative Measurement of ultratrace gases in blowholes Suitable for various material evaluation

### Feature

- Quantitative and Qualitative analysis of gases emitted from blowholes of specimen in vacuum chamber is possible by using Quadrupole Mass Spectrometer ( QMS ). Blowholes are appeared in Steel Welded part, Continuous casting material, Casting product, etc.
- QMS which has High Sensitivity & Resolution gives capability of easy and detail analyzing of the gases in blowholes existed in Steel, Nonferrous metals, Glass, etc.



### Application:

- Cause investigation of material defect
- Material Design Verification
- Evaluation of Surface Contamination Process in Manufacturing
- Specify degassing condition

Measurement & Analysis of customer's specimen is available ( be charged ).  
Feel free to contact us.

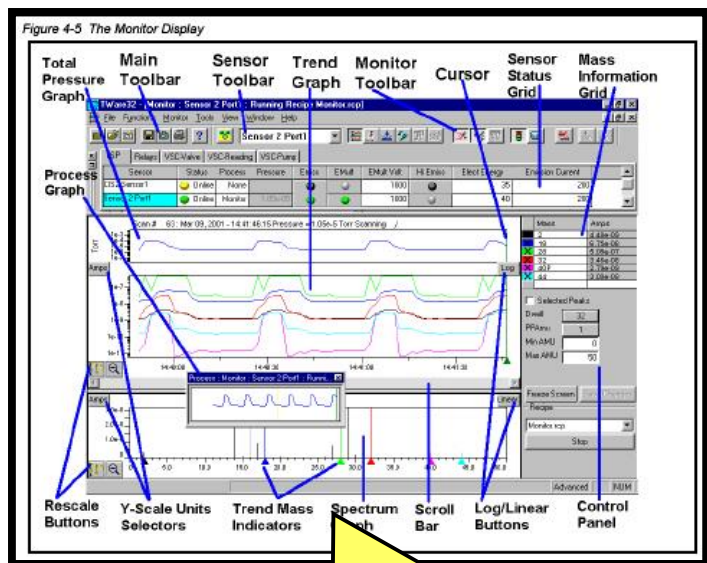
### Object Material:

Metal, Welding material, Glass vacuum package, etc.



### Monitor Display:

Simultaneous display of AMU ion current and vacuum gauge indicated value. Enable to save data as time-series.



Analysis result of blowhole of welding part !

### Batch type Analysis Chamber:

Simplified Chamber Structure has big advantage in Changing specimen, Maintenance, Washability.

